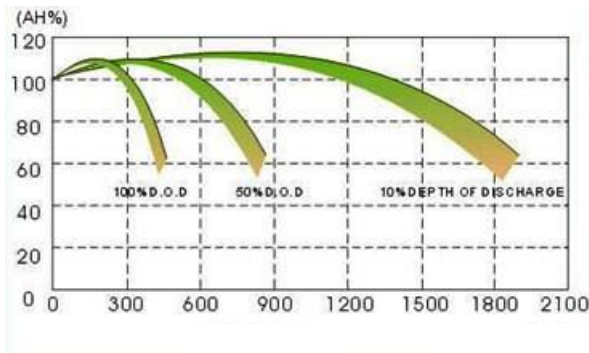


Features

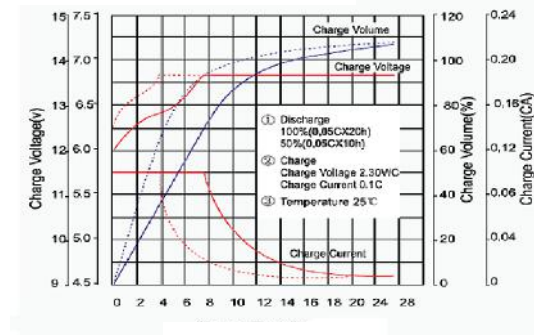
- Gelled electrolyte reducing corrosion and longer cyclic life of plates
- Come up to 2000 cycles when discharging at 20%DoD
- Very good rechargeable ability after deep-discharge
- Working never: Temp. -20~50°C and altitude: 4500m
- Safety approved by UL and suitable for far sea shipping



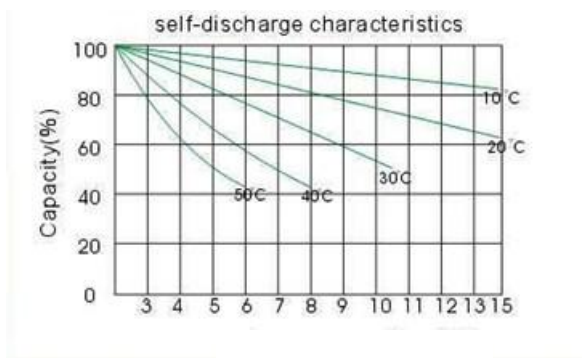
Characteristic Curve



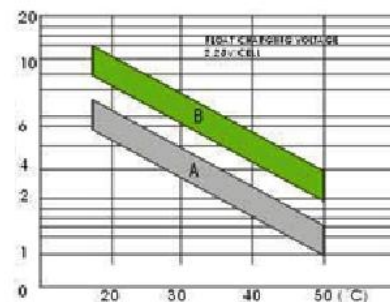
Battery charge and discharge cycles



Battery charge cycles



Storing characteristics



Temperature

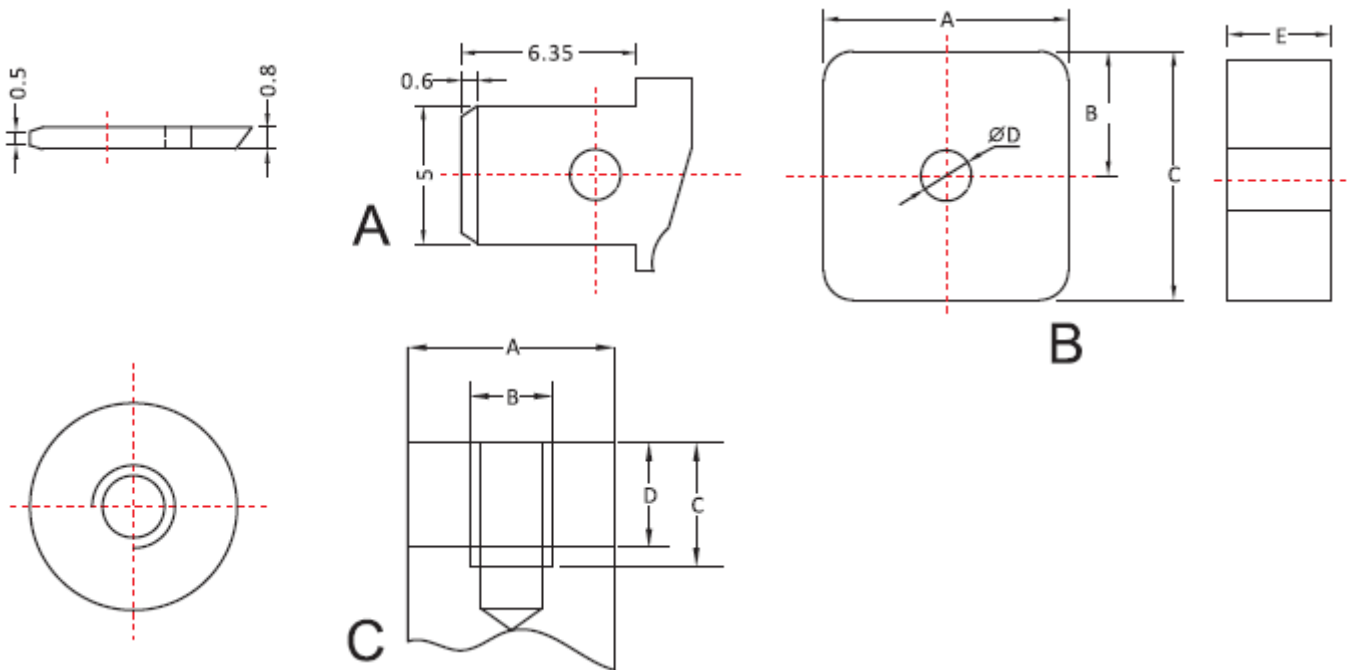
Max. Discharge Current	1200A(5sec)
Internal Resistance	Approx.0.48 mΩ(Fully charged)
Self-Discharge	< 2%/25°C
Design Life	18years (floating charge)
Operating Temp. Range	Discharge: -20 °C~50 °C / Charge : -10°C~50°C / Storage: -10°C~40°C
Standby Use	Charging Current:No limit / Voltage:13.4~13.8V / Temperature compensation:-3mV/°C
Cycle Use	Charging Current: ≤0.25C / Voltage:14.4~15.0V / Temperature compensation:-3mV/°C
Container Material	ABS (UL94-HB)UL94-V1

*Note: The Specifications are subject to changes without notice.

Specifications

Specification	Models	Rated capacity 10HR(AH)	Length 1) (mm)	(± Width 1) (mm)	(± Height 2) (mm)	(± Total Height (±2)(mm)	Weight (Kg)
12V100AH	W12-100S	100	327	171	213	236	31
12V120AH	W12-120S	120	332	174	235	239	34
12V150AH	W12-150S	150	440	160	240	245	49
12V200AH	W12-200S	200	480	238	210	240	62
12V250AH	W12-250S	250	513	250	210	240	70

Terminal type size



Terminal type	A	B	C	D
C1	Φ20	MB	12	8
C2	Φ20	MB	14	9

Terminal type	A	B	C	D	E
B1	12	6.5	12	7.2	2
B2	13	4.5	12	5.5	5
B3	16	7.5	16	6.2	7
B4	16	7.5	16	6.2	7
B5	18	10.5	20	8.0	10
B6	23	8.5	18	7.2	7
B7	25	11.5	25	6.5	8
B8	29	15.5	33	12.5	9
B9	24	12.5	37	10.5	11

*Note: The Specifications are subject to changes without notice.