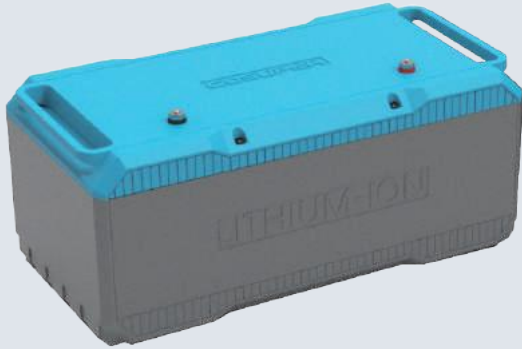


W-L Series

Energy Storage LiFePO4 Battery



Reliable Energy Storage Solution For 24V System

Application



House ESS



Communication Station



Commercial Backup

Features

- High cycle life. Keep capacity higher than 80% (@>3600 cycles; @80% DOD, @0.5C discharging)
- Completely closed design, no noxious gas during using
- Lithium iron phosphate battery is the safest lithium battery at present. With high thermal stability of the material, it will not cause explosion or combustion due to overcharge, short circuit, impact or excessive temperature
- Excellent temperature compatibility; Work at temperature of -20°C~60°C(discharge)

Protection

- Short circuit
- Low volt / High volt
- Over-charge / Over discharge
- Over temperature

Electrical Specification	W24-120L
Rated voltage	25.6V(45.6~57.6V)
Rated capacity	120 Ah
Min. capacity @0.2C	100 Ah
Rated energy	3072Wh
Output efficiency	> 99%
Energy retention	≥ 90%
Cell capacity difference	≤ 1%

Discharge

Discharge current	0~120A
Over discharge protect	180A @8s
Surge-current protect	240 A @500ms
Low-volt shut down	20.8 V @1s
Low-volt recovery	24.4 V
Output short circuit	≥240A/500ms; auto recover after short-circuit removed; Continuous 10 times short circuit lockup, charge battery for unlock.

Charge

Suggested charge current	30~60 A
Max. charge current	75 A
Over-charge alarm/cut-off	60A / 70 A
Suggested charge voltage	27.2~28.4 V
Over-charge protect	28.8V
Over-charge recovery	26.8V

Temperature

Discharge temperature	-20~60°C
Charge temperature	0~50°C
Storage temperature	-20~35°C
BMS over-temp shut down	60°C

Mechanical

Dimension mm (L×W×H)	490×260×244 mm
Weight	32.5 kg
Battery cell	Aluminum LFP cube