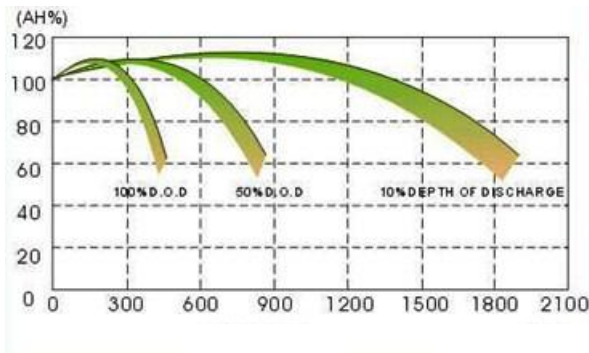


## Features

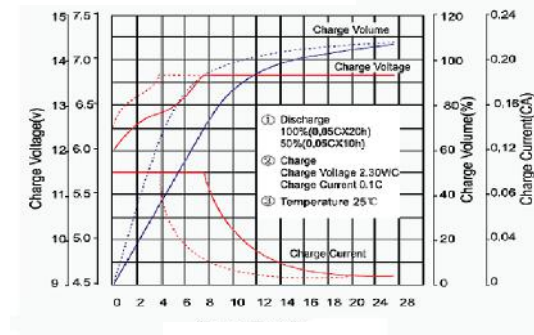
- Gelled electrolyte reducing corrosion and longer cyclic life of plates
- Come up to 2000 cycles when discharging at 20%DoD
- Very good rechargeable ability after deep-discharge
- Working never: Temp. -20~50°C and altitude: 4500m
- Safety approved by UL and suitable for far sea shipping



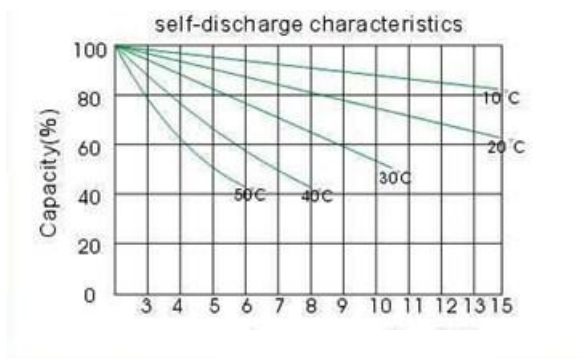
## Characteristic Curve



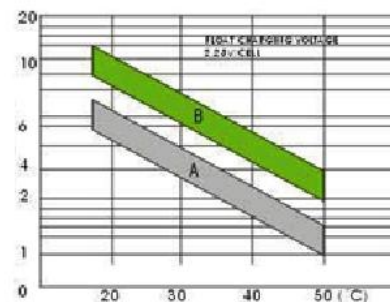
Battery charge and discharge cycles



Battery charge cycles



Storing characteristics



Temperature

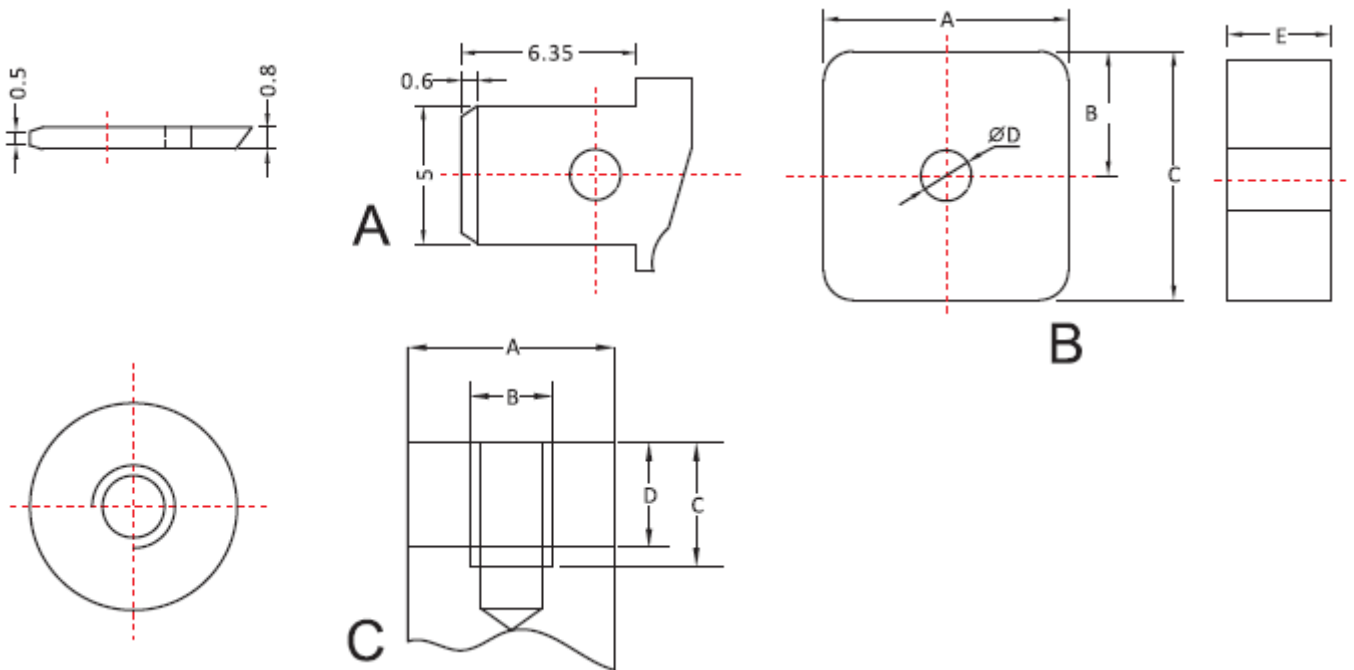
Max. Discharge Current	1200A(5sec)
Internal Resistance	Approx.0.48 mΩ(Fully charged)
Self-Discharge	< 2%/25°C
Design Life	18years (floating charge)
Operating Temp. Range	Discharge: -20 °C~50 °C / Charge : -10°C~50°C / Storage: -10°C~40°C
Standby Use	Charging Current:No limit / Voltage:13.4~13.8V / Temperature compensation:-3mV/°C
Cycle Use	Charging Current: ≤0.25C / Voltage:14.4~15.0V / Temperature compensation:-3mV/°C
Container Material	ABS (UL94-HB)UL94-V1

\*Note: The Specifications are subject to changes without notice.

## Specifications

Specification	Models	Rated capacity 10HR(AH)	Length 1) (mm)	(± Width 1) (mm)	(± Height 2) (mm)	(± Total Height (±2)(mm)	Weight (Kg)
12V100AH	W12-100S	100	327	171	213	236	31
12V120AH	W12-120S	120	332	174	235	239	34
12V150AH	W12-150S	150	440	160	240	245	49
12V200AH	W12-200S	200	480	238	210	240	62
12V250AH	W12-250S	250	513	250	210	240	70

## Terminal type size



Terminal type	A	B	C	D
C1	Φ20	MB	12	8
C2	Φ20	MB	14	9

Terminal type	A	B	C	D	E
B1	12	6.5	12	7.2	2
B2	13	4.5	12	5.5	5
B3	16	7.5	16	6.2	7
B4	16	7.5	16	6.2	7
B5	18	10.5	20	8.0	10
B6	23	8.5	18	7.2	7
B7	25	11.5	25	6.5	8
B8	29	15.5	33	12.5	9
B9	24	12.5	37	10.5	11

\*Note: The Specifications are subject to changes without notice.